

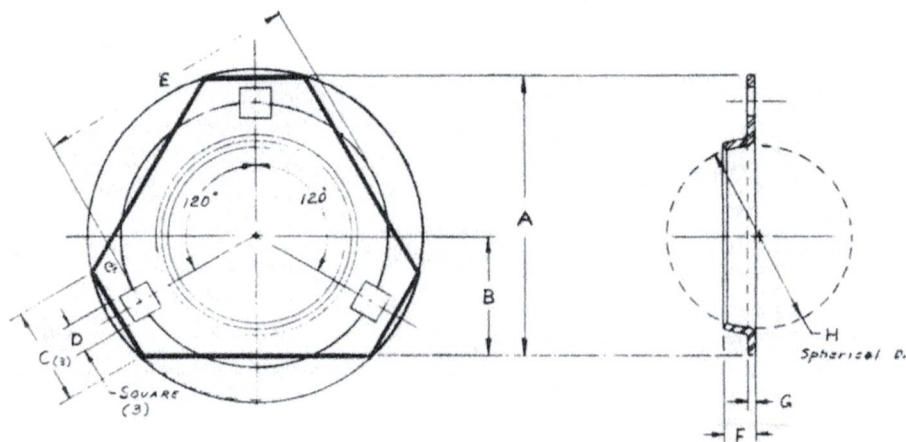


## PRESSED STEEL HOUSINGS



### TRIANGULAR THREE-BOLT FLANGES FOR STANDARD BALL BEARING UNITS

- Each pair of flanges has a spherical inside surface which mates with the spherical outer surface of the ball bearing ring to provide self-alignment in any direction.
- a minimum space is required for installation, they are used where space is limited.



#### Dimensions of pressed steel flanges

Stamping Number	Shaft Size	A	B	C	D + -.005	E	F	G	H	Minimum Frame Opening
PFT203	1/2 & 5/8	2-23/32	1-1/8	13/16	9/32	2-1/2	9/32	0.075	40MM	1-15/16
PFT204	3/4	3	1-5/16	1-1/16	11/32	2-13/16	5/16	0.083	47MM	2-3/16
PFT205	7/8, 15/16 & 1	3-1/8	1-3/8	1-3/32	11/32	3	11/32	0.083	52MM	2-3/8
PFT206	1-1/16, 1-1/8, 1-3/16, 1-1/4	3-11/16	1-1/2	1	13/32	3-9/16	11/32	0.104	62MM	2-13/16
PFT207	1-1/4, 1-5/16, 1-3/8, 1-7/16	4-5/32	1-3/4	1-17/64	13/32	3-15/16	3/8	0.104	72MM	3-3/16

Standard Stock Item is Zinc Plated



BEARING  
UNITS