

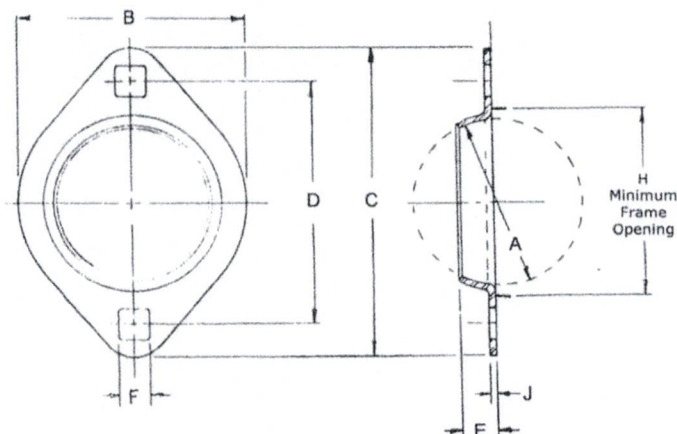


## PRESSED STEEL HOUSINGS



### TWO BOLT FLANGETTE FOR STANDARD BALL BEARING UNITS

- One housing unit consists of two identical self-aligning flanges.
- Each pair of flanges has a spherical inside surface which mates with the spherical outer surface of the ball bearing ring to provide self-alignment in any direction.



Stamping Number	Shaft Size	A	B	C	D	E	F	H	J	Bolt Size	Radial load Rating Lbs	FAFNIR	SKF	NTN
PFL203	1/2 & 5/8	40 mm	2-5/16	3-3/16	2-1/2	9/32	9/32	1-15/16	0.075	1/4	600	40MST	FT-40	PFL203
PFL204	3/4	47 mm	2-5/8	3-9/16	2-13/16	5/16	11/32	2-3/16	0.083	5/16	700	47MST	FT-47	PFL204
PFL205	7/8 to 1	52 mm	2-51/64	3-3/4	3	11/32	11/32	2-3/8	0.083	5/16	800	52MST	FT-52	PFL205
PFL206	1-1/16 to 1-1/4	62 mm	3-5/16	4-7/16	3-9/16	11/32	13/32	2-13/16	0.104	3/8	1100	62MST	FT-62	PFL206
PFL207	1-1/4 to 1-7/16	72 mm	3-11/16	4-15/16	3-15/16	7/16	13/32	3-3/16	0.104	3/8	1400	72MST		PFL207

Standard Stock Item is Zinc Plated